

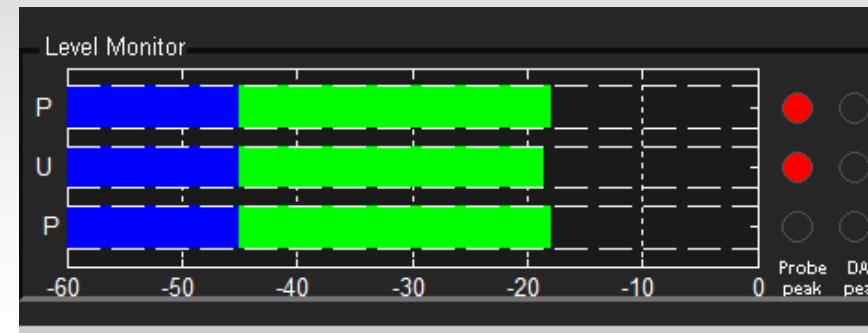
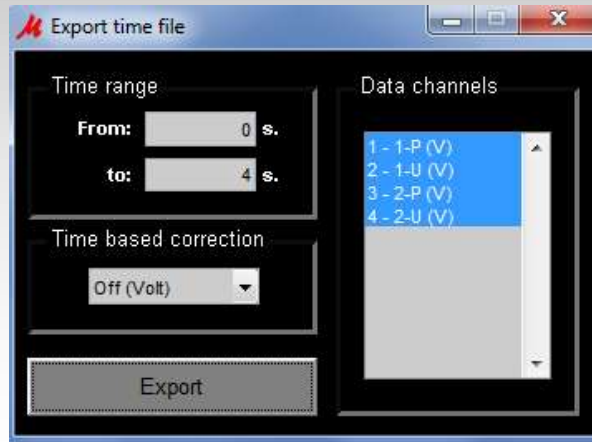
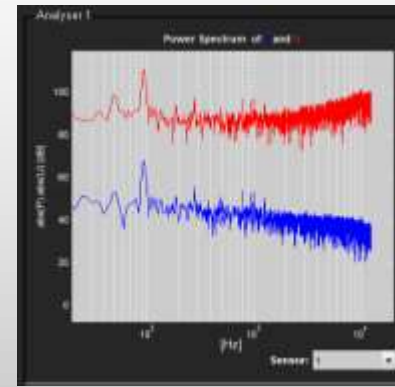


ANALYSER

RUN STANDARD ANALYSIS ON YOUR MEASUREMENT. SINGLE TO MULTICHANNEL MEASUREMENTS CAN BE DISPLAYED, ANALYSED AND EXPORTED.

ANALYZER MAIN FEATURES

- Data Acquisition and storing
- Real time view and signal control
- Exporting functionality



ANALYSER



SW WORKFLOW

HW setup

- Select frontend
- Activate sensors
- Arrange channels

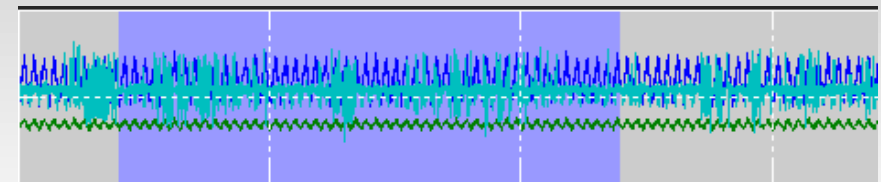
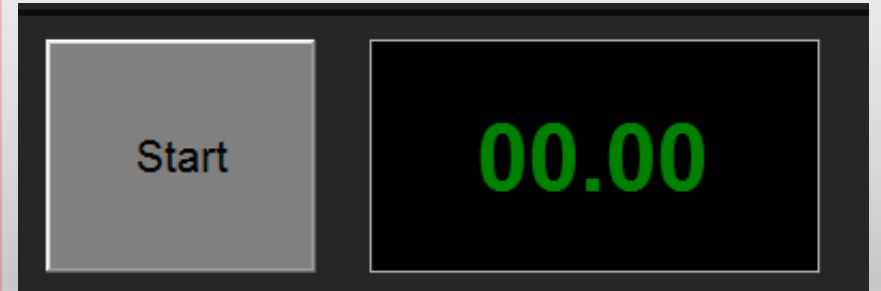
Capture

- Real time view and signal control
- Acquisition and storing
- Basic exporting functionality

Analyze data

- Generate a project file and manage project data
- Analyze project
- Export project file data

Report

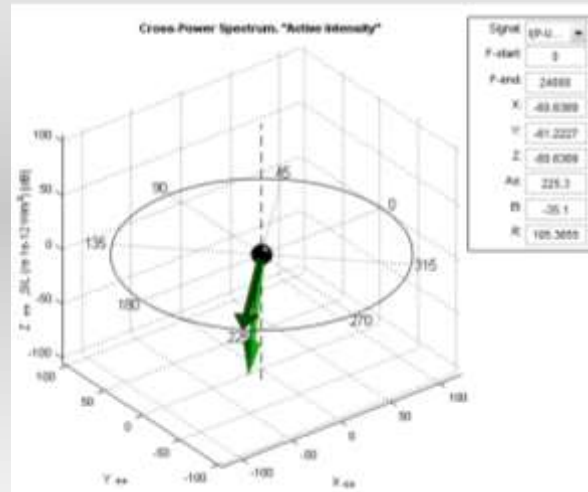


ANALYSER



DATA ACQUISITION

- Maximum channel count supported
- All platform supported sensor types



Probe	out	DAQ channel
srer, PU Probe	P	3
3, PU Probe		
ffff, PU Probe		

- Edit probe
- Edit tag
- Change probe
- Add probe above
- Remove probe



ANALYSER

Probe database

Edit Add: Microphon... Remove



REAL TIME SIGNAL CONTROL

- Configurable analyzer windows:
- Configurable frequency range and other parameters
- Select different channels/different sensor to each analyzer
- Different parameter for display
- Snapshot and basic signal exporting features



ANALYSER

