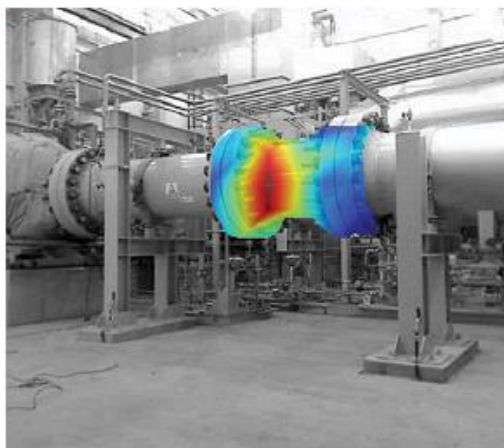


Microflown Software Platform

**REDUCE THE PRESSURE  
IN YOUR WORK  
GO FOR  
PARTICLE VELOCITY**



# VELO 4B // RELEASE NOTE

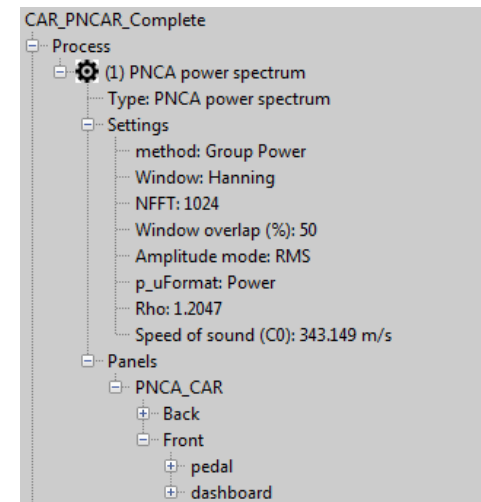
# VELO 4B

## Analyser

The new **Analyser** is designed to offer a **flexible** framework to handle a variety of measurement processes

Flexibility to customize the working procedure at any stage of measurement: Record and define the project structure later or create a working tree to follow during a measurement campaign. A chart based workflow offers an intuitive guidance through your measurements.

The possibility to create measurement templates speeds up the working procedure and furthermore, it is a robust platform to handle data for repeatable measurement campaigns.

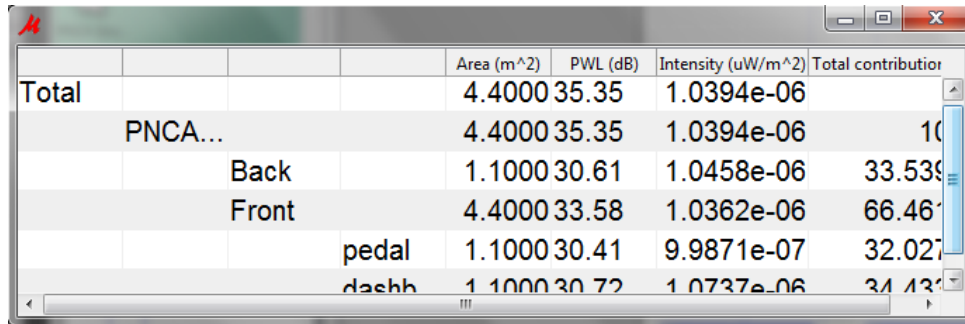


# VELO 4B Analyser

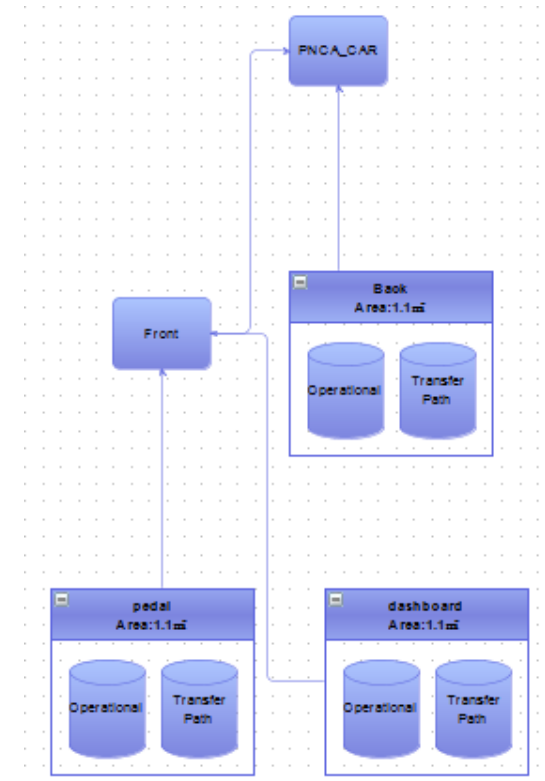
## Visual editor to create project structure

Simply drag and drop measurement blocks and set connections to define the data structure.

Quick and easy results can be represented as analytic data e.g. a contribution table to rank the (sub) contributions to the total sound perceived.



	Area (m <sup>2</sup> )	PWL (dB)	Intensity (uW/m <sup>2</sup> )	Total contribution
Total	4.4000	35.35	1.0394e-06	
PNCA...	4.4000	35.35	1.0394e-06	100.00
Back	1.1000	30.61	1.0458e-06	33.53
Front	4.4000	33.58	1.0362e-06	66.46
pedal	1.1000	30.41	9.9871e-07	32.02
dashb	1.1000	30.72	1.0737e-06	34.13

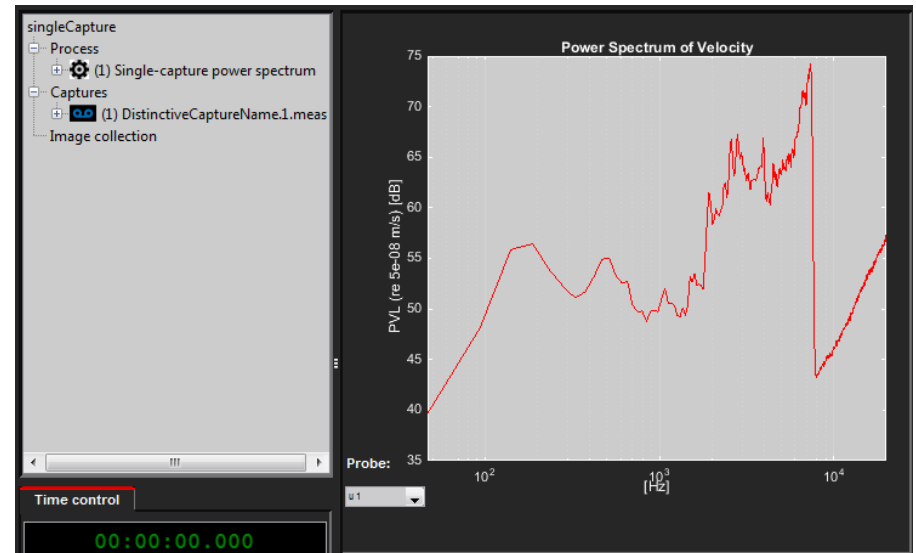


# VELO 4B Analyser

## Single Capture: Quick & Easy

Optimal for projects requiring the capture and analysis of a single measurement.

Access your results right after the measurement with no workflow pre-definition.



# VELO 4B Analyser

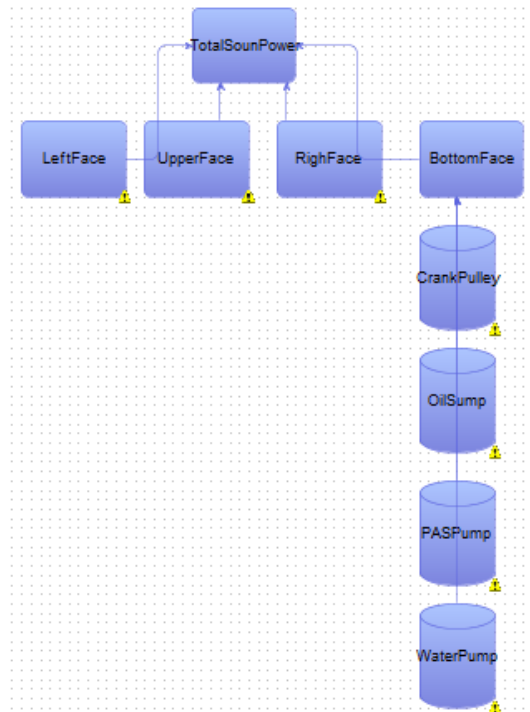
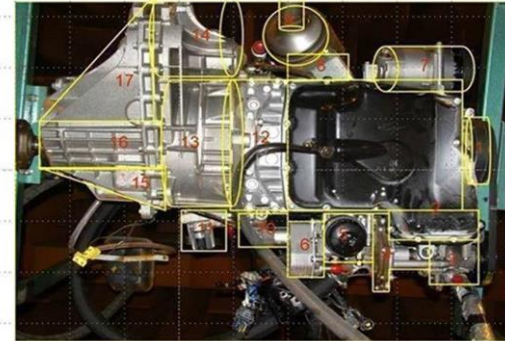
## Multi Capture

Offering a tool for measurement campaigns that requires combining data from multiple captures. The workflow chart provides an intuitive guidance through your measurements.

Synchronization of different captures in time or order domain enables the calculation of sound power per order.

BOTTOM FACE

1. Crank pulley
2. Oil sump
3. PAS pump
4. Water pump
5. Oil filter
6. Oil cooler
7. A/C pump
8. Catalyst bracket
9. Catalyst
10. Starter motor
11. EGR valve
12. Ladder frame
13. Clutch housing
14. Gear box differential
15. Gear box left
16. Gear box middle
17. Gear box right

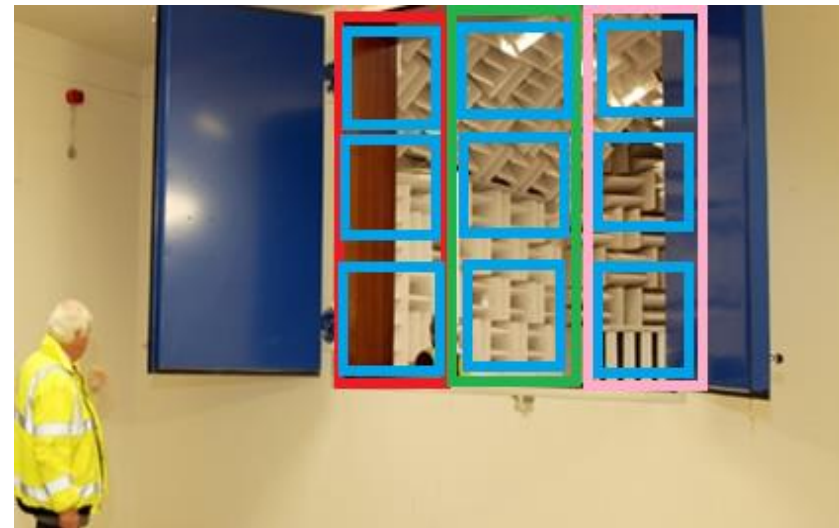
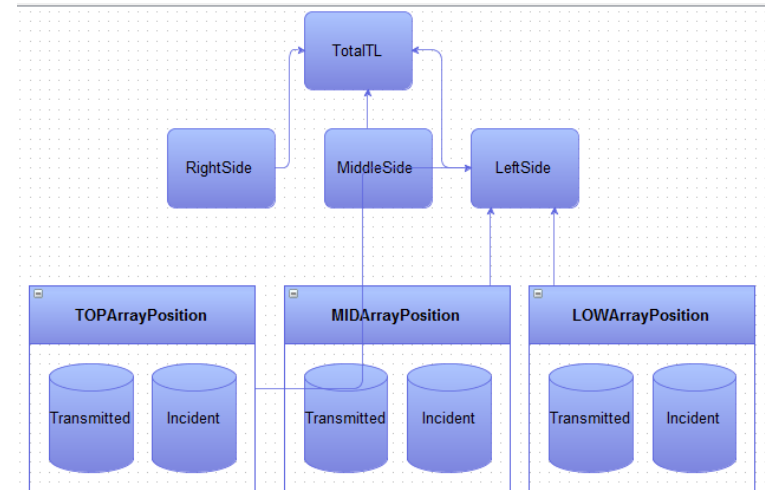


# VELO 4B Analyser

## Transmission Loss

Besides the total TL results, the other new included features are:

- Combining several array positions in one particular result for faster characterization.
- Grouping the results as intermediate sub-components for better structure behavioral insight.



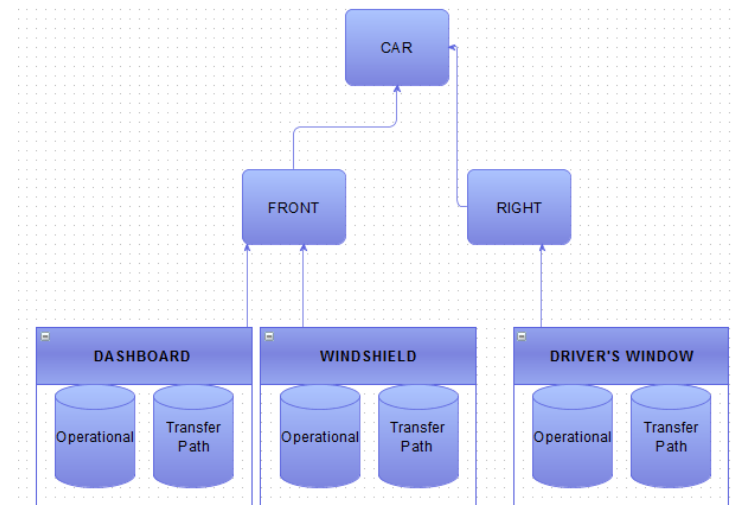
# VELO 4B

## Analyser

### Panel Noise Contribution Analysis

The PNCA module of the Analyser can evaluate the airborne transfer path analysis. These results will provide you with not only an insight into the sound source locations but also their contribution to a defined position.

Dedicated blocks for operational and transfer function measurements helps you create the structure of cabin interior in a quick and easy manner.

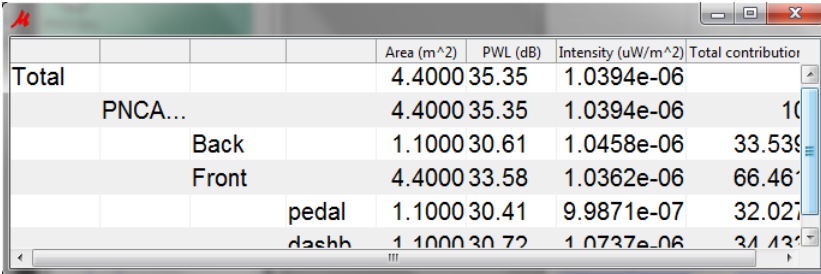


# VELO 4B Analyser

## Panel Noise Contribution Analysis

The data can be represented in a comprehensive contribution table that provides a detailed insight on main contributors to the total sound perceived.

To ensure that the captured data is correct, a fast and easy validation step for quality assurance has been introduced, where the total sound pressure at the reference position can be compared to the sum of all contributions, the so called synthesis.



	Area (m <sup>2</sup> )	PWL (dB)	Intensity (uW/m <sup>2</sup> )	Total contribution
Total	4.4000	35.35	1.0394e-06	
PNCA...	4.4000	35.35	1.0394e-06	100.00%
Back	1.1000	30.61	1.0458e-06	33.53%
Front	4.4000	33.58	1.0362e-06	66.46%
pedal	1.1000	30.41	9.9871e-07	32.02%
dashb	1.1000	30.72	1.0737e-06	34.13%



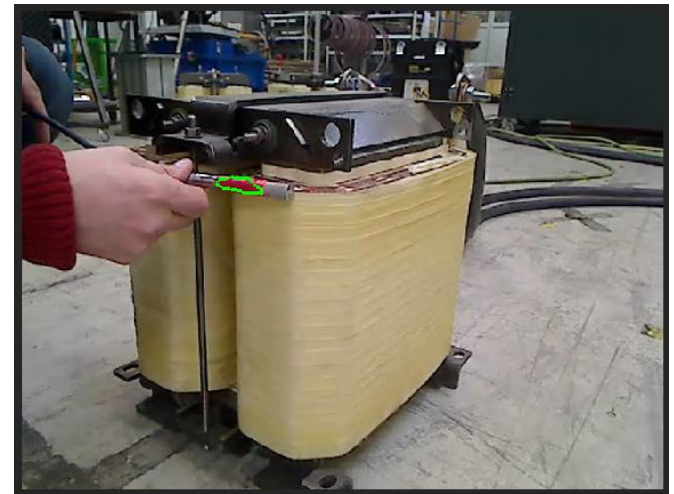
# VELO 4B

## Scan&Paint

### Improved probe color selection

Color selection in just one mouse click!

Pick the color and scroll to expand the selection from within the color selection tool to highlight the whole color marker for better tracking.

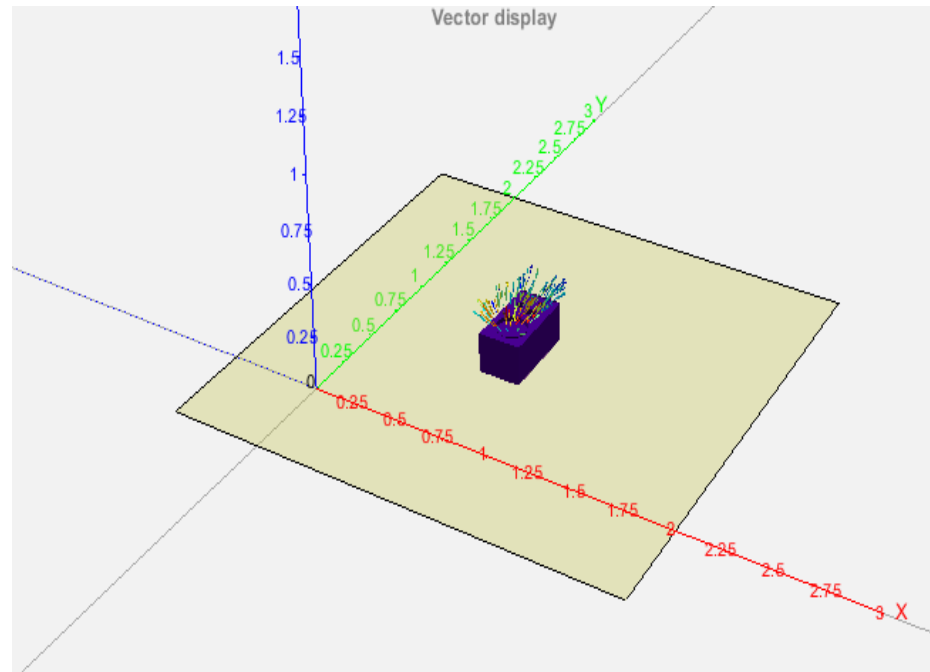


# VELO 4B

## Scan&Paint

Improved visualization,  
3D navigation &  
Grid identification

Configure the appearance of the 3D space and  
choose the indicators to be displayed.

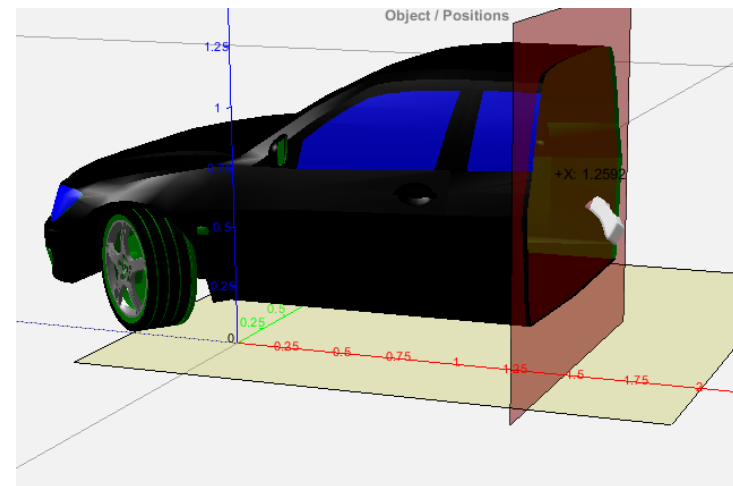


# VELO 4B

## Scan&Paint 3D

### Improved model navigation for better result visualization

Offers quick-tools to easily hide and unhide parts of the 3D model to ensure a clear view of the displayed sound data.

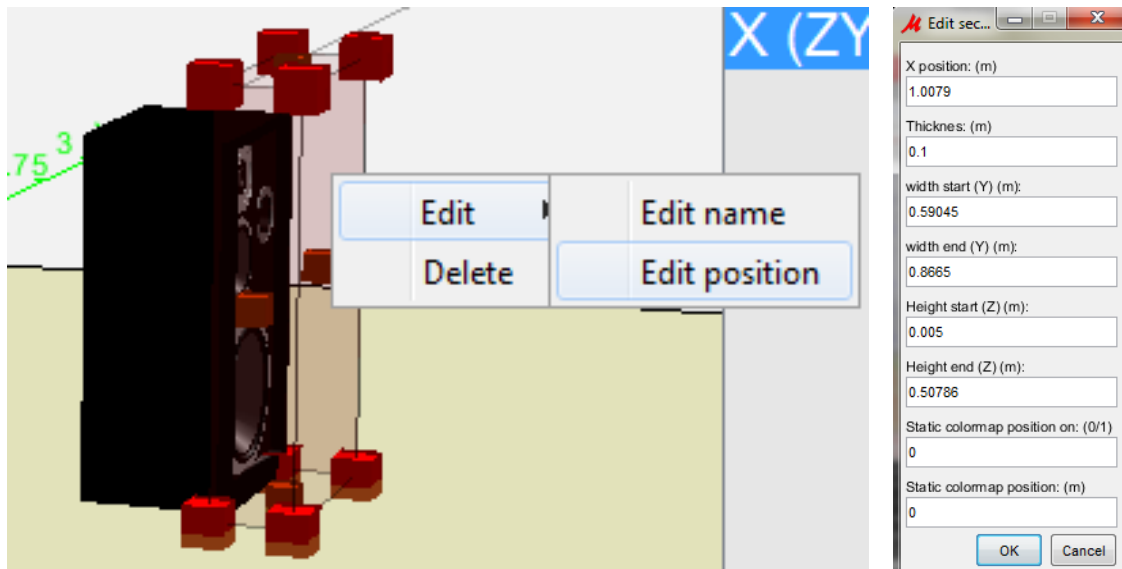


# VELO 4B

## Scan&Paint 3D

### Ensure robust data comparison

Set the exact position and thickness of a section to ensure analysed data within the same section is compared.

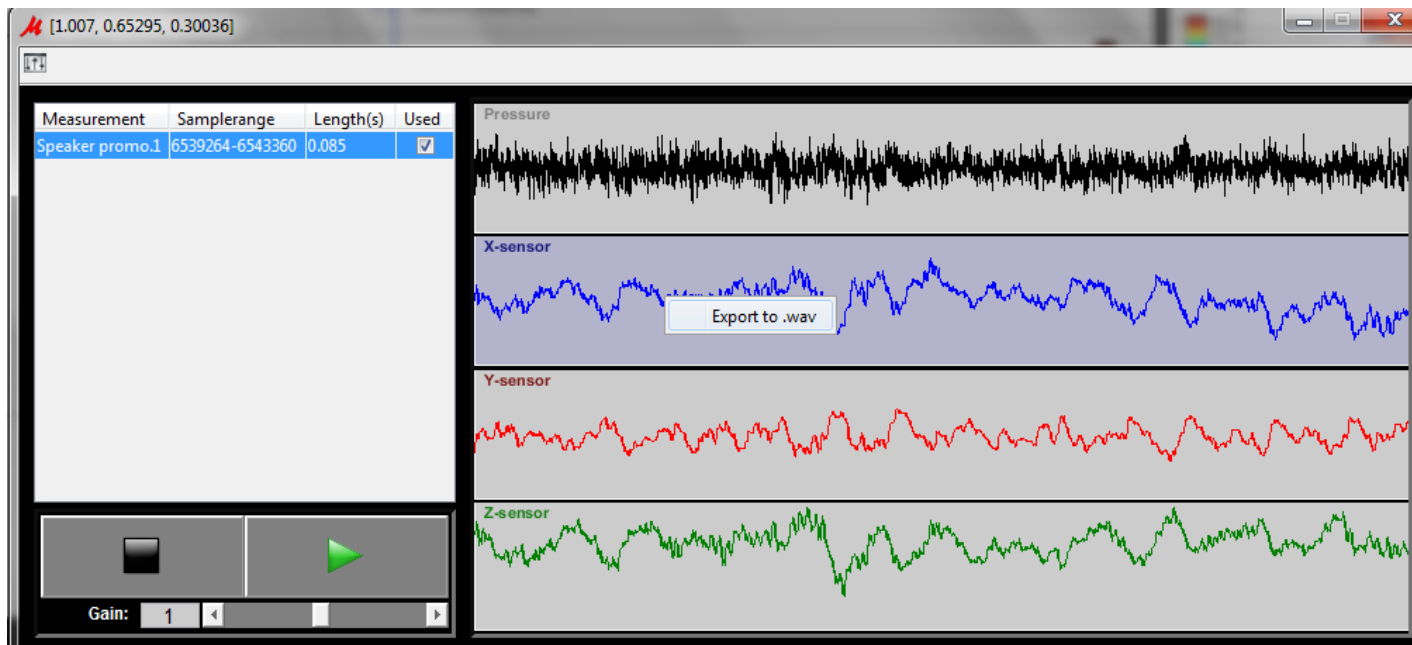


# VELO 4B

## Scan&Paint 3D

### Improved sound source reporting

Listen and export a specific data point for further analysis or reporting.



# VELO 4B

## Sound Power

### Optimized working procedure

Automatic selection of the “next cell” to ensure the standard scanning trace procedure is followed.

